

TILES

An end-to-end solution from controls to LED fixtures!

Unique, impactful lighting for floor & wall applications

UL (2108 and 1838) wet listed

Use indoors or outdoors

Rugged, controllable, & dimmable

Several Sizes and Shapes

LightWild Tiles are available in squares, rectangles, long linears, circles, and hexagons. Sizes range from narrow 2x12 inch (55x300 mm) rectangles to 28x28 inch (700x700 mm) squares.

Install in Almost Any Environment or Material

Stainless steel housings and frosted tempered glass lenses ensure every size Tile stands up to light traffic weight and weather elements with a high slip rating (co-efficient of friction) in interior and exterior locations. Tiles have been used in a variety of applications including walls, cement and concrete, landscape pavers, hardwood and simulated wood flooring, ceramic and marble tiles, patios, lobbies, sidewalks, pathways and landscaping.

Includes Support Boxes to Ease Installation

Every LightWild Tile is available with an accompanying support box that includes built-in conduit openings, rebar connectors, wooden blockouts and screw mounting holes for securing a Tile's place in the installation environment during the construction phase.



* = FLOOR or WALL
** = LED COLOR
Dimensions listed are nominal.
See data sheets for complete information.

LIGHTWILD TILES



4 in (100 mm) diameter
1.3 W per Tile
Part No. LW-TILE*-CIRC-4**



6 in (150 mm) diameter
4 W per Tile
Part No. LW-TILE*-CIRC-6**



8 in (200 mm) diameter
6 W per Tile
Part No. LW-TILE*-CIRC-8**



12 in (300 mm) diameter
14.7 W per Tile
Part No. LW-TILE*-CIRC-12**



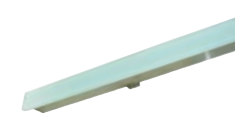
10 in (250 mm) diameter
6.3 W per Tile
Part No. LW-TILE*-HEX-10**



2x12 in (55x300 mm)
4 W per Tile
Part No. LW-TILE*-RECT-2x12**



2x24 in (55x600 mm)
8 W per Tile
Part No. LW-TILE*-RECT-2x24**



2x36 in (55x900 mm)
10 W per Tile
Part No. LW-TILE*-RECT-2x36**



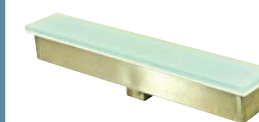
2x48 in (55x1200 mm)
12 W per Tile
Part No. LW-TILE*-RECT-2x48**



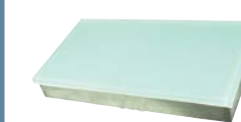
4x8 in (100x200 mm)
4 W per Tile
Part No. LW-TILE*-RECT-4x8**



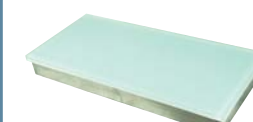
4x20 in (100x500 mm)
9.8 W per Tile
Part No. LW-TILE*-RECT-4x20**



4x24 in (100x600 mm)
11 W per Tile
Part No. LW-TILE*-RECT-4x24**



12x24 in (300x600 mm)
34 W per Tile
Part No. LW-TILE*-RECT-12x24**



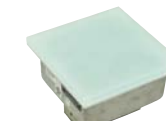
12x36 in (300x900 mm)
51 W per Tile
Part No. LW-TILE*-RECT-12x36**



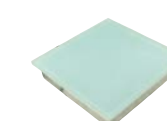
4x4 in (100x100 mm)
1.3 W per Tile
Part No. LW-TILE*-SQR-4x4**



6x6 in (150x150 mm)
5.2 W per Tile
Part No. LW-TILE*-SQR-6x6**



8x8 in (200x200 mm)
8 W per Tile
Part No. LW-TILE*-SQR-8x8**



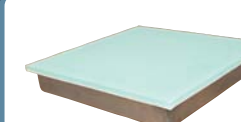
12x12 in (300x300 mm)
16.8 W per Tile
Part No. LW-TILE*-SQR-12x12**



16x16 in (400x400 mm)
31 W per Tile
Part No. LW-TILE*-SQR-16x16**



20x20 in (500x500 mm)
58 W per Tile
Part No. LW-TILE*-SQR-20x20**



24x24 in (600x600 mm)
63.6 W per Tile
Part No. LW-TILE*-SQR-24x24**



28x28 in (700x700 mm)
94 W per Tile
Part No. LW-TILE*-SQR-28x28**

Common Tile Features

- POWER REQUIREMENT: 24VDC
- LISTINGS: UL (2108, 1838)
- LOCATIONS: USE IN DRY, DAMP, OR WET LOCATIONS (NOT FOR USE IN SUBMERSIBLE APPLICATIONS)
- LENS: TEMPERED, FROSTED GLASS

- SLIP RESISTANCE CO-EFFICIENT OF FRICTION: 0.75 DRY, 0.71 WET
- HOUSING: STAINLESS STEEL
- TEMPERATURE RANGE: -13 TO 167 F (-25 TO 75 C)
- MOISTURE INGRESS: IP67

- CABLE CONNECTION: 18 GAUGE 2- OR 4-CONDUCTOR CABLE WITH PLAIN ENDS INSIDE CONNECTION TERMINAL BOX
- LED COLORS: WARM WHITE, COOL WHITE, RGB, BLUE, GREEN, RED, AND AMBER

- CONTROL: ON/OFF, DIMMING, AND RGB COLOR CONTROL-LABLE OPTIONS AVAILABLE. SEE SEPARATE CONTROL UNIT SPECIFICATION SHEETS FOR MORE INFORMATION.

LIGHTWILD

TILES

PROJECTS



Walt Disney World Swan and Dolphin Resort
Orlando, Florida



W Hotel • Atlanta Midtown
Atlanta, Georgia
Design: Stephen Alton Architect



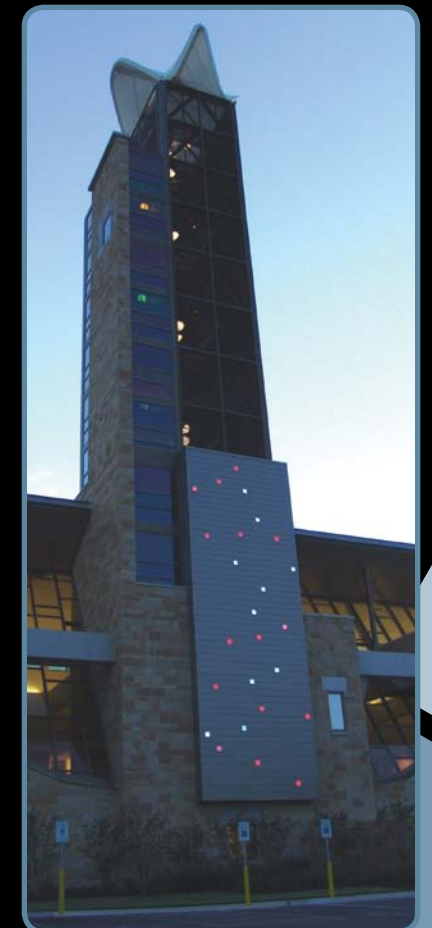
Peace Officers Memorial
Minneapolis, Minnesota
Design: Dahlberg Architects and Lighting Matters



Atlantis III Resort and Spa
The Bahamas
Design: Lighting Design Alliance



Harley-Davidson Museum
Milwaukee, Wisconsin
Design: HGA



Dell Children's Hospital
Austin, Texas



160 Spear Street
San Francisco, California
Design: Bruce Jett Associates



Kansas City Art Institute
Kansas City, Missouri
Design: Bowman Bowman Novick, Inc.



r. Soles Shoe Store
St. Louis, Missouri
Design: Tobin+Parnes Design

See more LightWild projects at www.lightwild.com/showcase

projects@lightwild.com • (913) 851-3000 • www.lightwild.com **LIGHTWILD**