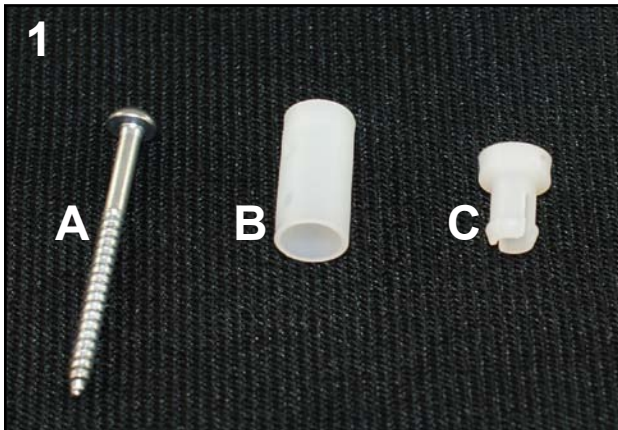
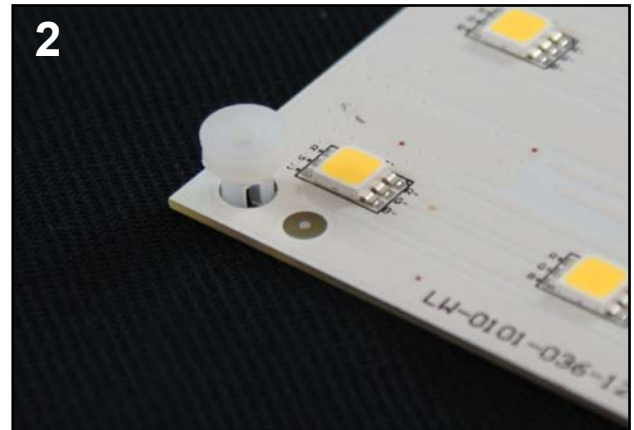


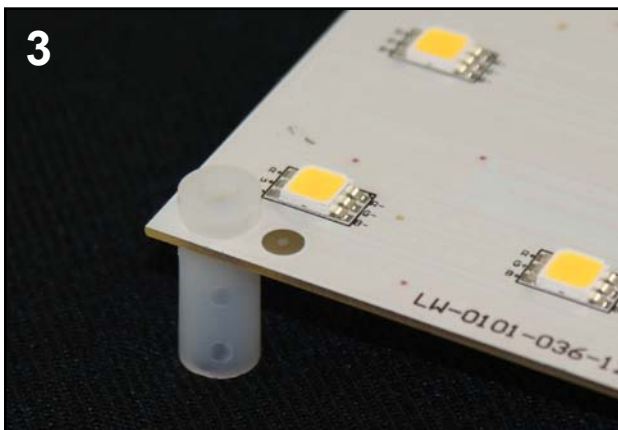
SCREW MOUNTING ASSEMBLY



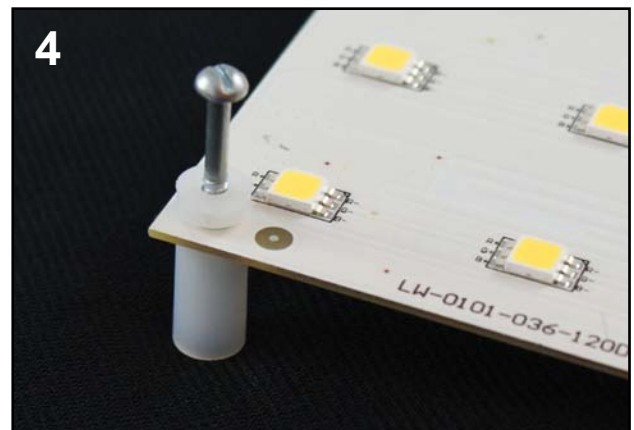
LOCATE THE SCREWS (A), STANDOFFS (B), AND FASTENERS (C) PROVIDED BY LIGHTWILD.



INSERT A FASTENER INTO ONE OF THE CORNER MOUNTING HOLES ON THE LIGHTWILD PANEL.

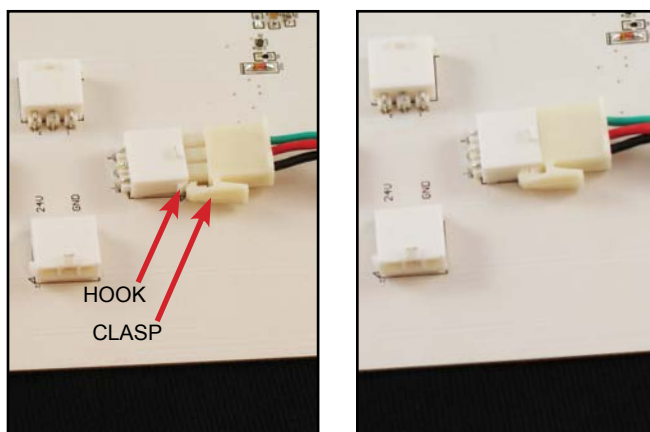


SECURE THE FASTENER INTO THE **NARROW END** OF THE STANDOFF. YOU SHOULD FEEL A SLIGHT CLICK WHEN PRESSING THE PARTS TOGETHER.



INSERT A SCREW INTO THE FASTENER AND SECURE THE PANEL TO THE SURFACE. (DO NOT OVERTIGHTEN.)

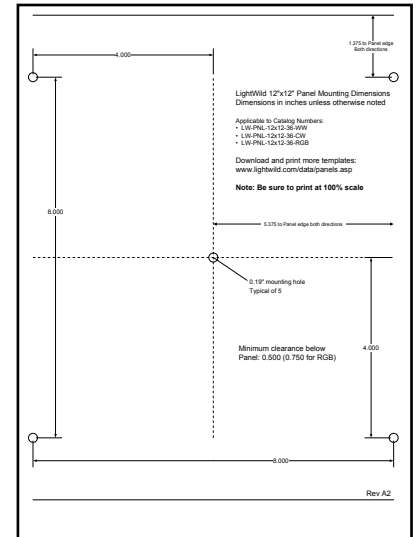
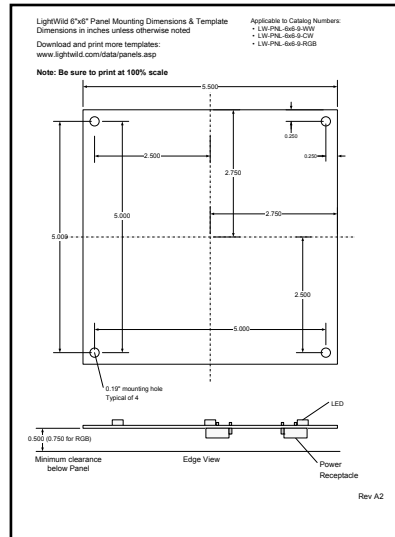
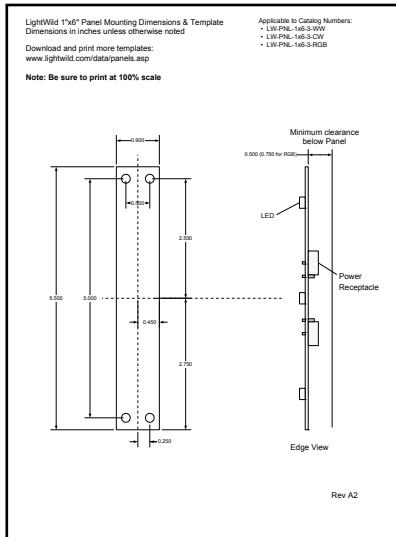
CABLE CONNECTIONS



USE LIGHTWILD SUPPLIED CABLES AND CONNECTORS ON THE BACK OF PANELS TO ENERGIZE AND CONTROL PANELS. LINE UP THE CLASP ON THE CABLE END AND HOOK ON THE CONNECTOR AND PRESS TOGETHER UNTIL YOU FEEL A SNAP. TO DISCONNECT, PRESS THE CLASP ON THE CABLE END AND PULL APART. THE CONNECTORS ARE UNIFORM IN FUNCTION; USE THE MOST CONVENIENT CONNECTOR TO CONNECT INCOMING OR OUTGOING CABLES.

PANEL TEMPLATES

LIGHTWILD PROVIDES TEMPLATES OF EACH PANEL SIZE. THESE TEMPLATES CAN BE USED TO DETERMINE THE PLACEMENT OF EACH PANEL IN THE PROJECT ENVIRONMENT BEFORE SECURING THE PANELS TO SURFACES.



DOWNLOAD TEMPLATES AT WWW.LIGHTWILD.COM

NOTES

- SEE WIRING DIAGRAMS FOR IMPORTANT ADDITIONAL INFORMATION.
- LIGHTWILD PANELS ARE MODULAR LED LIGHT SOURCES THAT CAN BE ARRANGED IN AN INFINITE NUMBER OF CONFIGURATIONS. TO ENSURE THE LIGHTING GOALS OF YOUR PROJECT ARE MET, CONSULT YOUR PROJECT'S DESIGN PLANS FOR THE PROPER ARRANGEMENT OF THE LIGHTWILD PANELS TO BE INSTALLED.
- PANELS ARE FRAGILE. HANDLE WITH CARE. DO NOT TOUCH OR SCRATCH SURFACE OF LEDS. AVOID CONTACT WITH ELECTRONIC PARTS ON BACK OF PANEL.